

Case Study : Saguenay (Quebec)

HCVF Workshop, Toronto
June 21th-22th, 2005

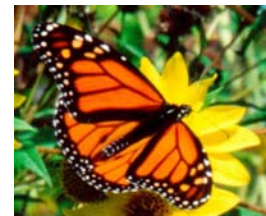
Presented by Gaétane Boisseau, M.Sc. Biologist
WWF-Canada





CONTENT

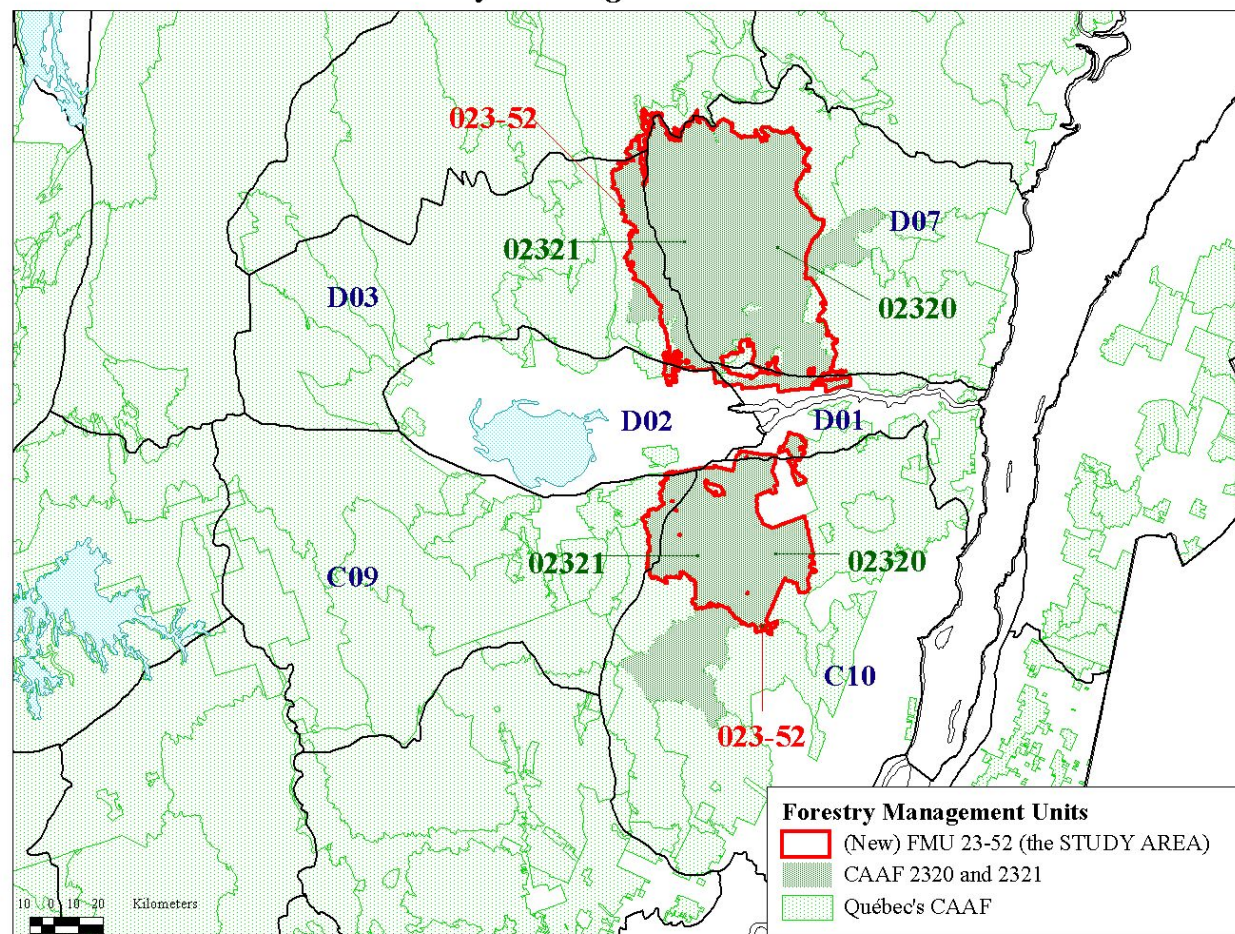
- Study Area : presentation
- Conservation in Québec
- Identification of Protected Areas
- Saguenay : Gap Analysis and Candidates Protected Areas
- HCVF : Concept and Categories
- HCVF Identification in Saguenay
- Obstacles to FSC Certification in Quebec
- Coulombe Report on Forest Management in Quebec
- Current Efforts
- Conclusion



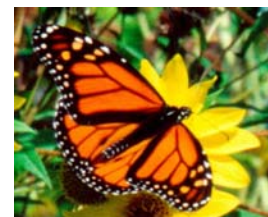


Study Area Localisation

Study Area for HCVF project with Abitibi Consolidated inc.
Forestry Management Unit 23-52



July 2003

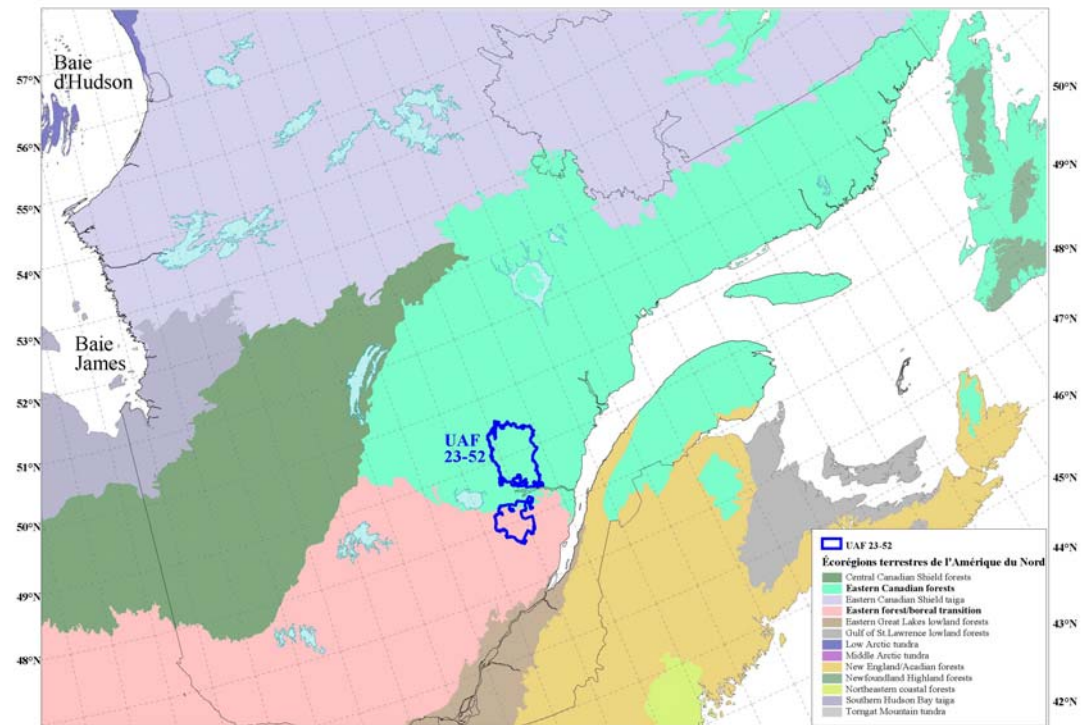




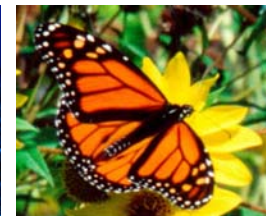
Description

- Ecoregions :
 - Eastern Canadian Forests
 - Eastern Forest / Boreal Transition
- Vegetation
 - Boreal Forest
 - Mixed Forest

Écorégions terrestres de l'Amérique du Nord et UAF 23-52



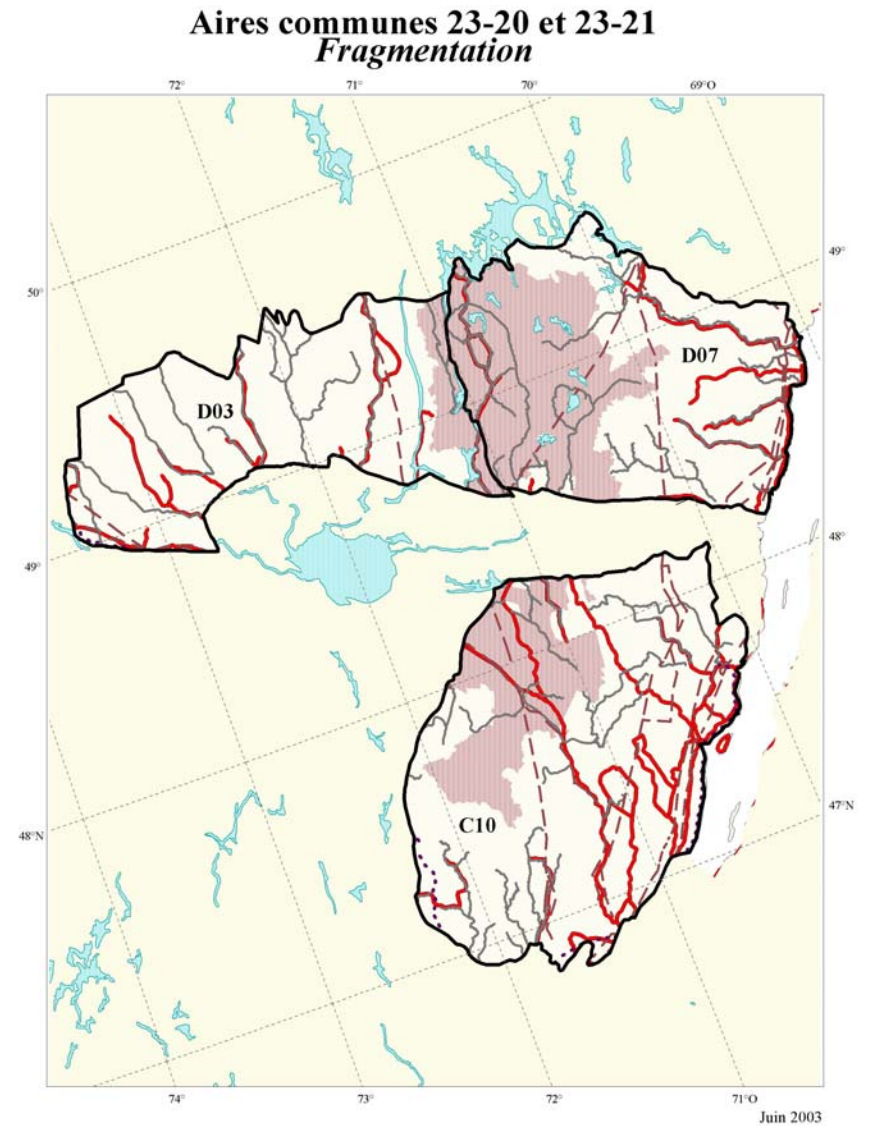
Réf. : Ricketts and al. 1999. Terrestrial Ecoregions of North America. WWF (US and Canada)





Description (continued)

- Road Network
 - Low Road Density up North
(with Few Intact Forests)
 - High Road Density down South



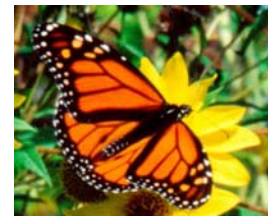


Biodiversity Values

- More Biodiversity Values up North
- Roadless Areas up North
- Caribou Habitat
- Old Growth Forests
- Endangered Species
- Connectivity with Monts-Valin and Saguenay National Parks

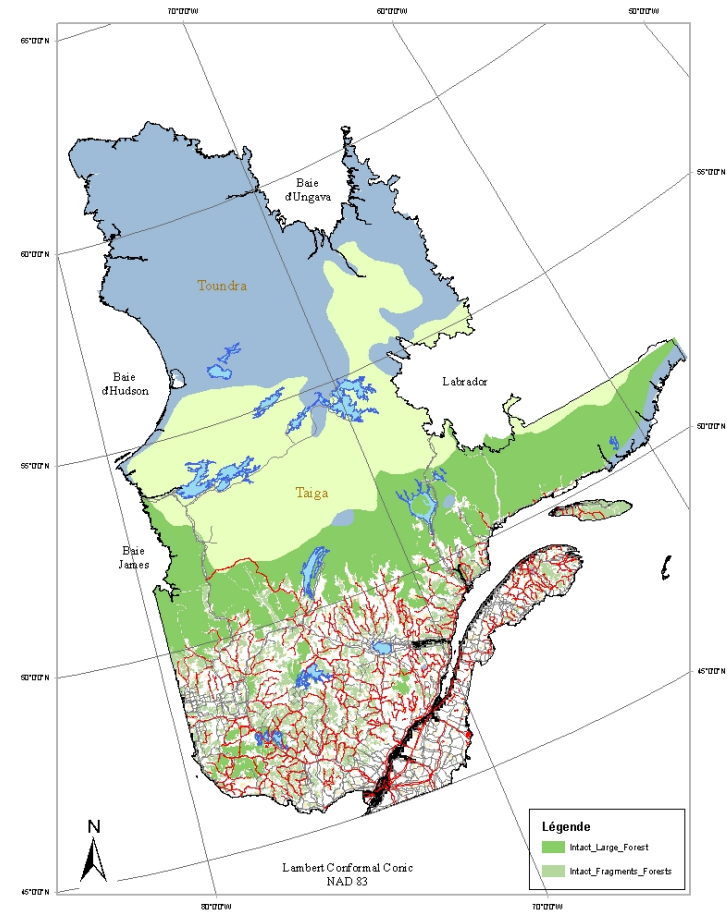
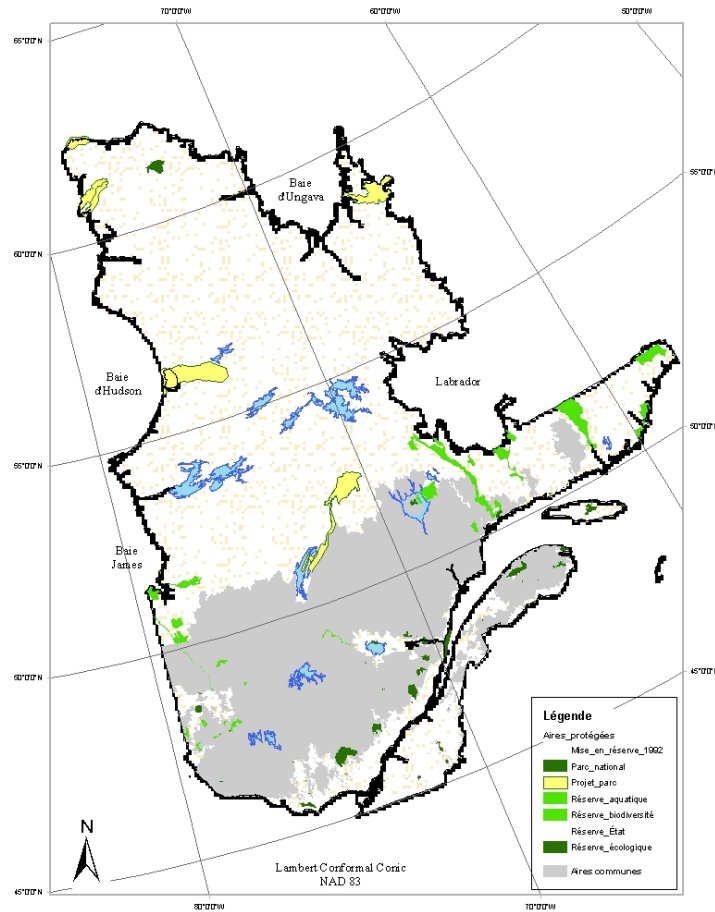


Woodland Caribou
Nature Image.net





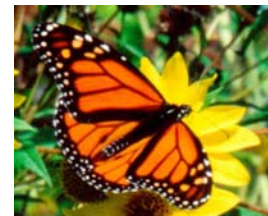
Conservation in Quebec





Identification of Protected Areas

- Gap Analysis
- Coarse Filter / Fine Filter
- Conservation Issues:
 - Loss and Fragmentation of Natural Habitats (i.e. Loss of Large Unfragmented Areas and Intact Forests)
 - Depletion of Old Growth Forests
 - Damage on Endangered Species' Critical Habitat
- Essential Values:
 - Ecological Representativity (Heterogeneity, Rarity)
 - Integrity, Connectivity, Minimal Size
 - Biological Values (Endangered Species, Old Growth Forests), Cultural and Social Values (First Nations, Recreational Tourism)

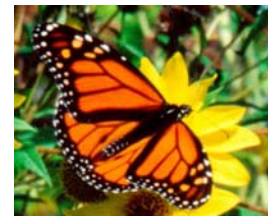
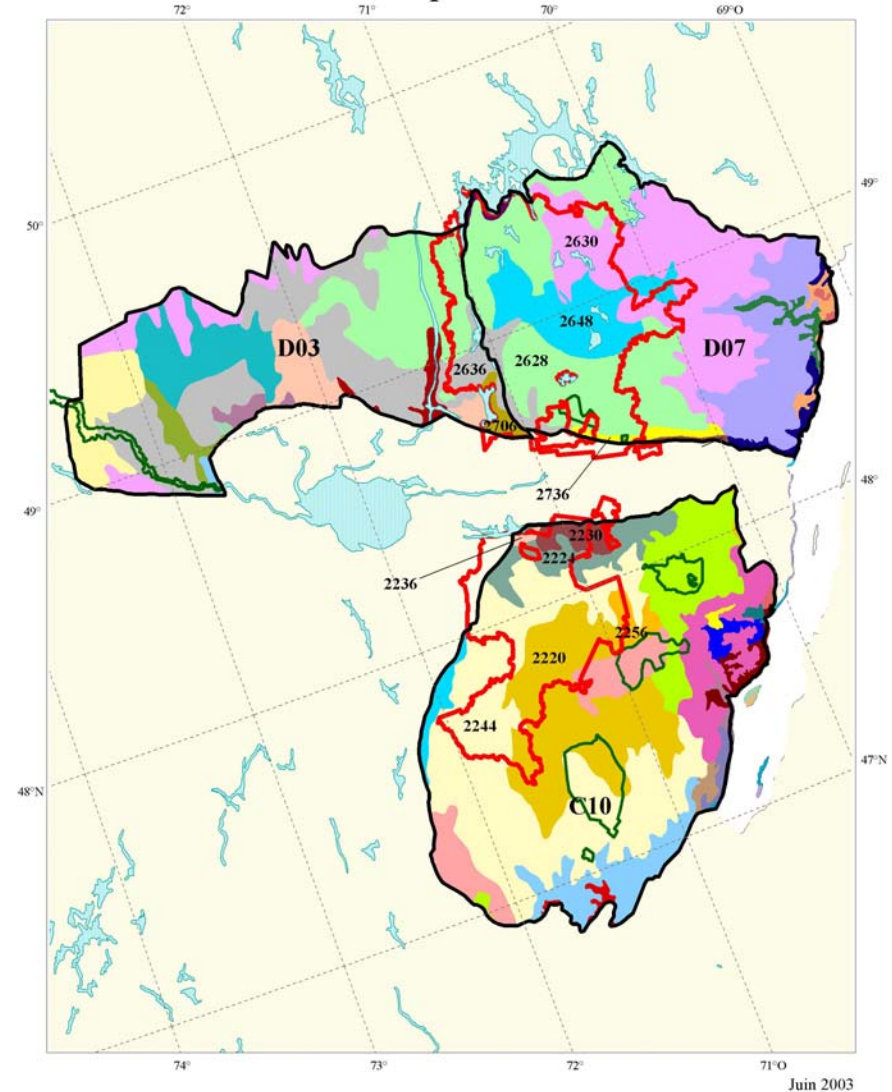




Methodology

- Gap Analysis
- Reference Ecological Framework (Natural Region)
- Enduring Features (Geographic Units for Ecological Characteristics)
- Identification (P.A. Size Area) Based on Accountability Level for the Company (or FMU)
- Representativity, Integrity, Connectivity, High Biological Values, etc.

Aires communes 23-20 et 23-21
Éléments persistants





Saguenay : Gap Analysis and Protected Areas

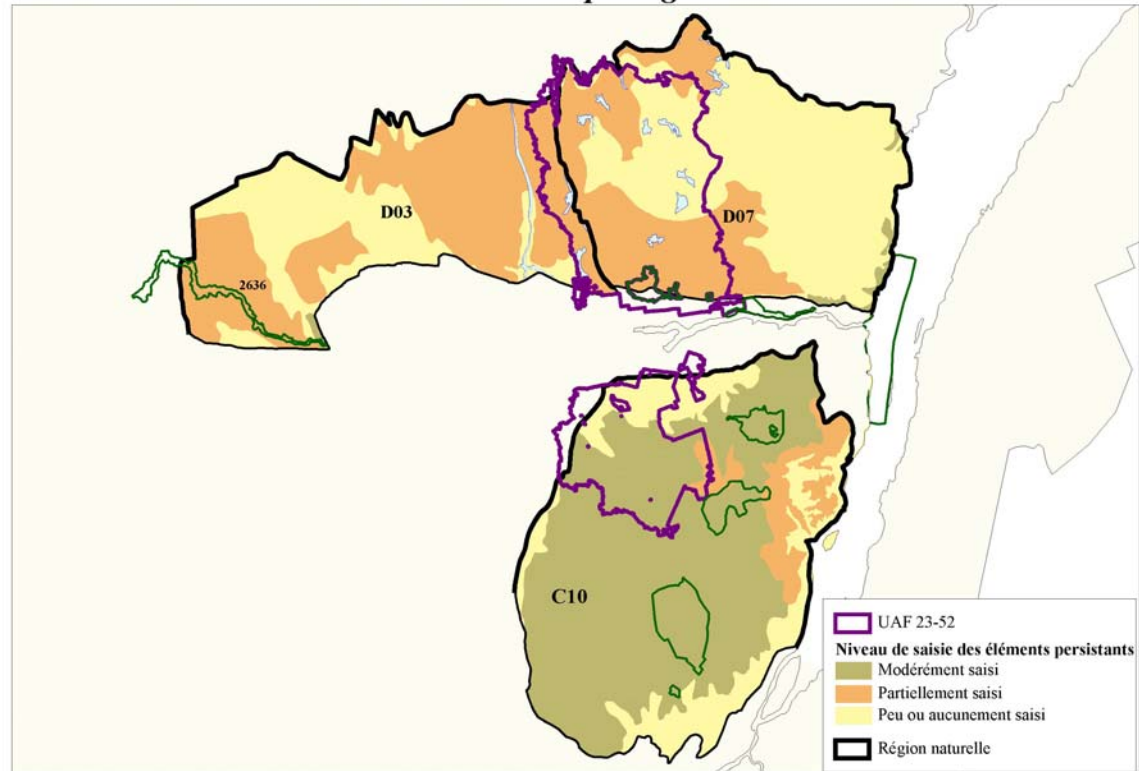
**Based Upon Existing
Protected Areas
Network Only**

Enduring Feature
Representation

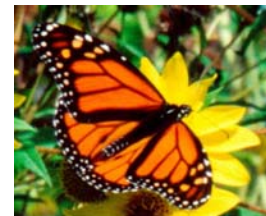
Natural Region
Representation

- D3 and D7 : Little or Not Represented
- C10 : Partially Represented

Niveau de saisie des éléments persistants
Avec seulement les aires protégées existantes



Mars 2004





Saguenay : Gap analysis and Protected Areas (cont.)

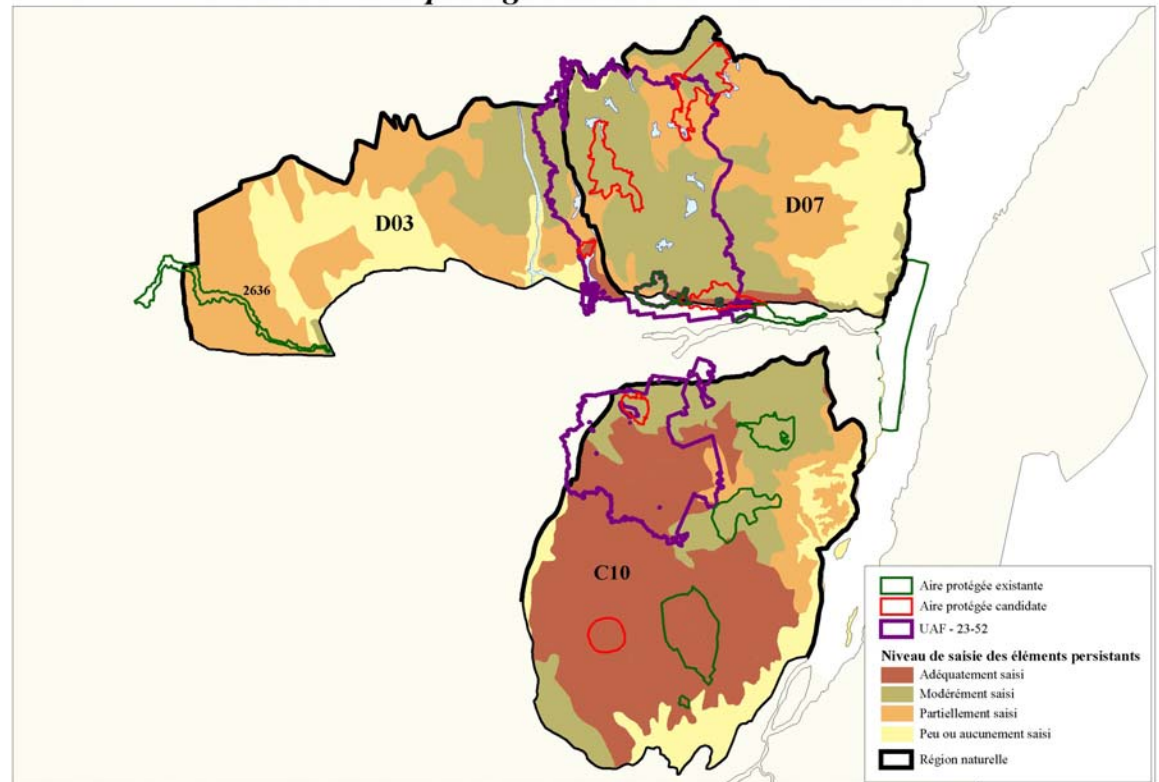
Including Candidates Protected Areas

Enduring Feature
Representation

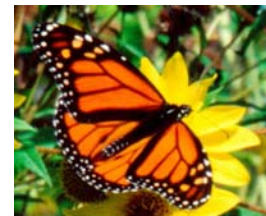
Natural Region
Representation

- D3 and D7 : **Became Partially Represented**
- C10 : Partially Represented (but Border Line to Moderate)

Niveau de saisie des éléments persistants
Avec les aires protégées existantes et candidates



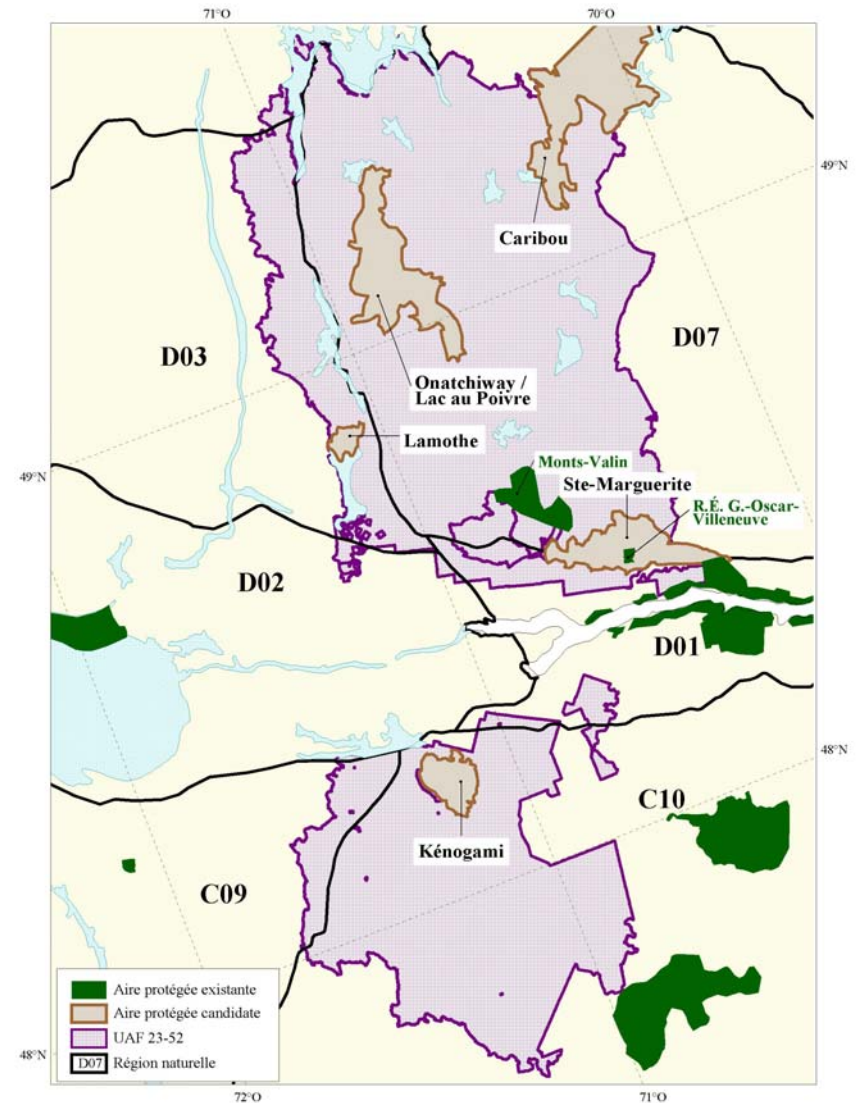
Mars 2004





Protected Areas

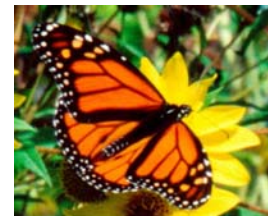
- Caribou (44 613 ha)
 - Caribou Habitat, High Integrity
 - Old Growth Forest
- Onatchiway (34 247 ha)
 - Mostly Unfragmented
 - Endangered Species
- Lamothe (3 194 ha)
 - Old Growth Forest
- Ste-Marguerite (22 062 ha)
 - High Integrity, Old Growth Forests
 - Connectivity with National Parks
- Kénogami (10 165 ha)
 - High Heterogeneity





High Conservation Value Forests

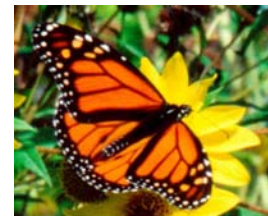
- HCVF Concept Enhances:
 - Environmental Values
 - Social and/or Cultural Valueswhich give a Unique Interest to a Given Forest
- Principle n° 9 Implies that We Need to Manage these Forests in Order to Maintain or Strengthen their High Conservation Values





HCVF's Categories

- **Cat. 1:** Significant Concentration of Biodiversity Values
- **Cat. 2 :** Very Large and Unfragmented Forests Maintaining Viable Populations
- **Cat. 3:** Rare, Threatened or Endangered Ecosystems
- **Cat. 4 :** Provide Basic Services of Nature in Critical Situations
- **Cat. 5 :** Forests Areas Fundamental to Meeting Basic Needs of Local Communities
- **Cat. 6 :** Forests Areas Critical to Local Communities' Traditional Cultural Identity



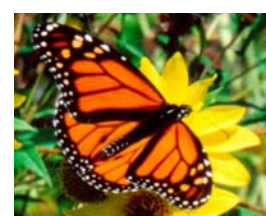
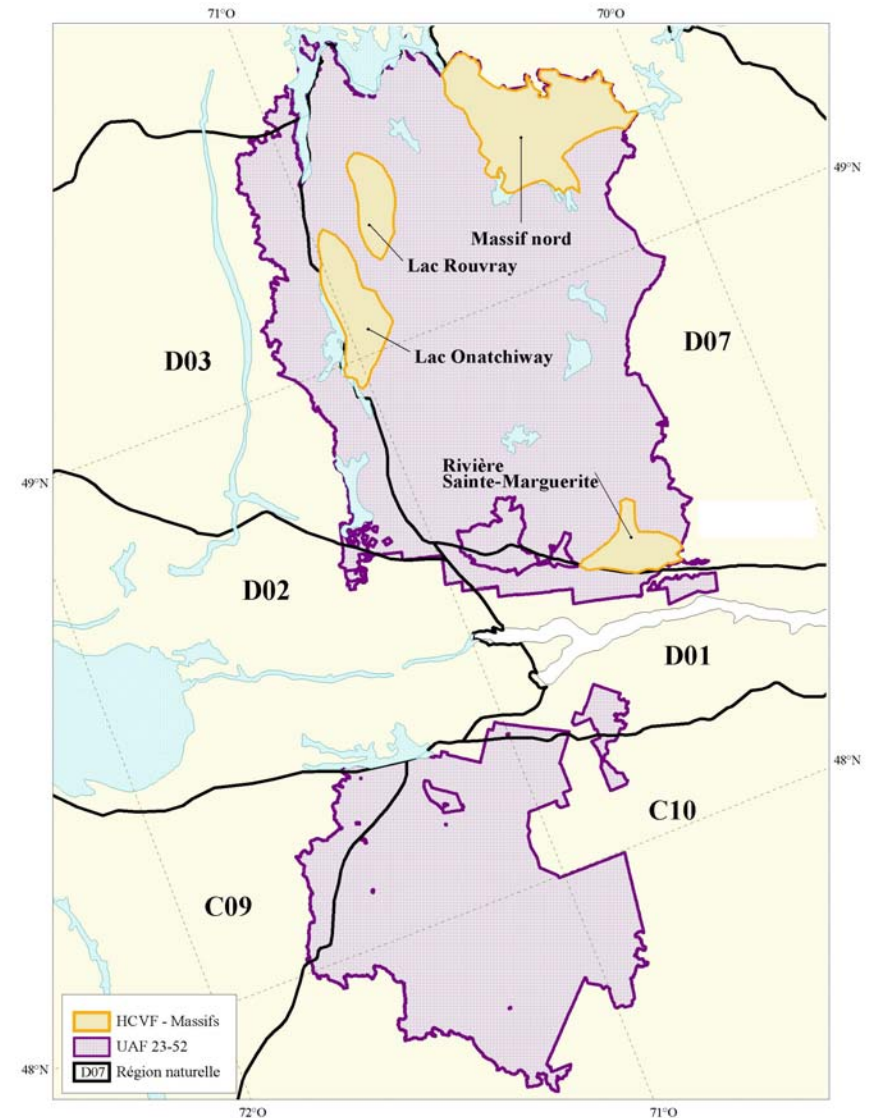


HCVF Identification in Saguenay

Main Issues

- **Conserve Intact Forests**
- Protect Caribou Habitat
- Protect Old Growth Forests
- Protect Endangered Species

HCVF : **Mostly
Unfragmented Forests**



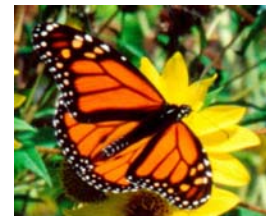
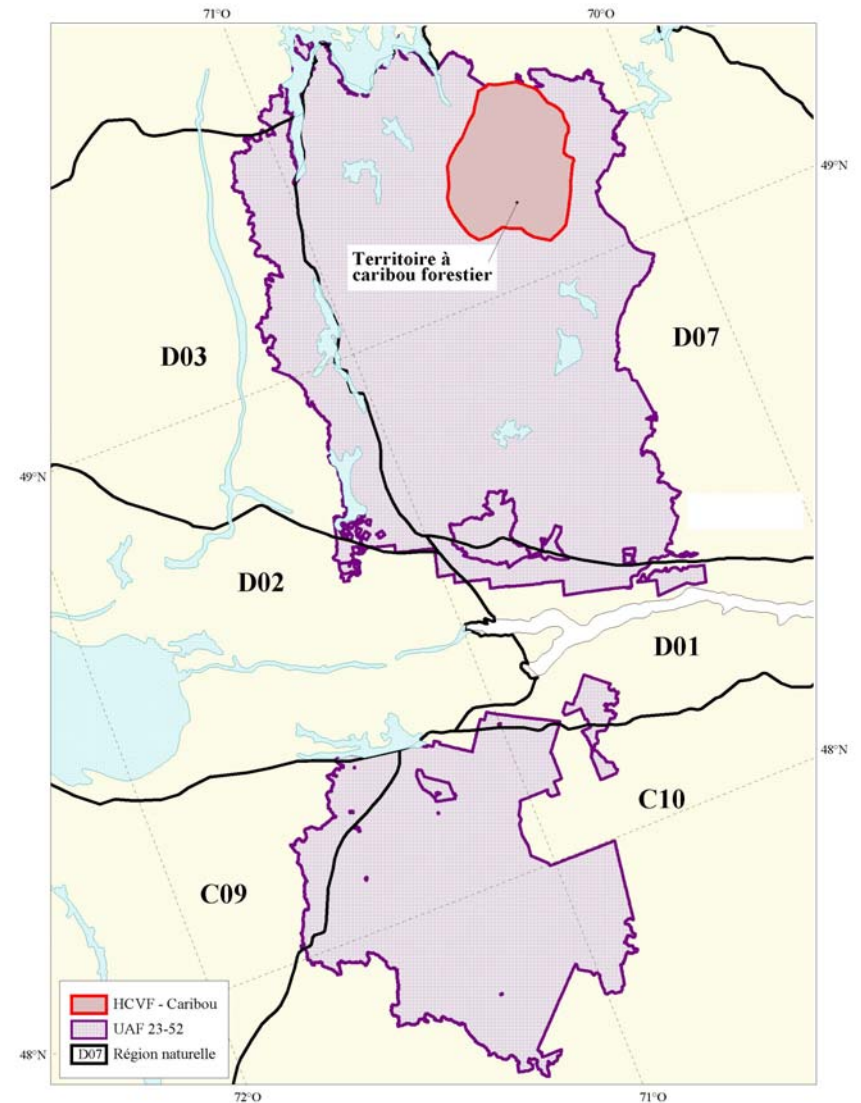


HCVF Identification in Saguenay

Main Issues

- Conserve Intact Forests
- **Protect Caribou Habitat**
- Protect Old Growth Forests
- Protect Endangered Species

HCVF : Caribou Habitat



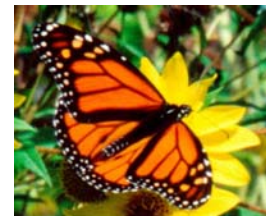
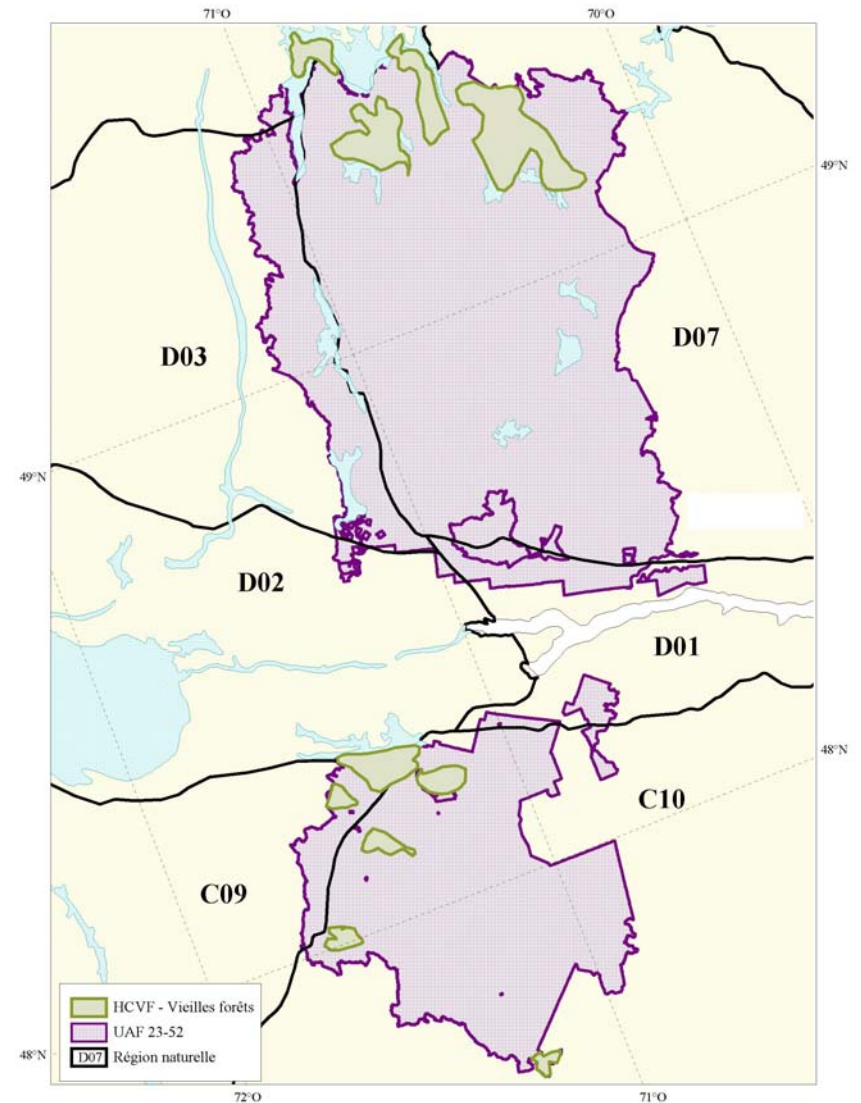


HCVF Identification in Saguenay

Main Issues

- Conserve Intact Forests
- Protect Caribou Habitat
- **Protect Old Forests**
- Protect Endangered Species

HCVF : Old Growth Forests



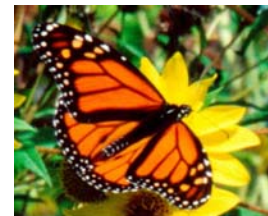
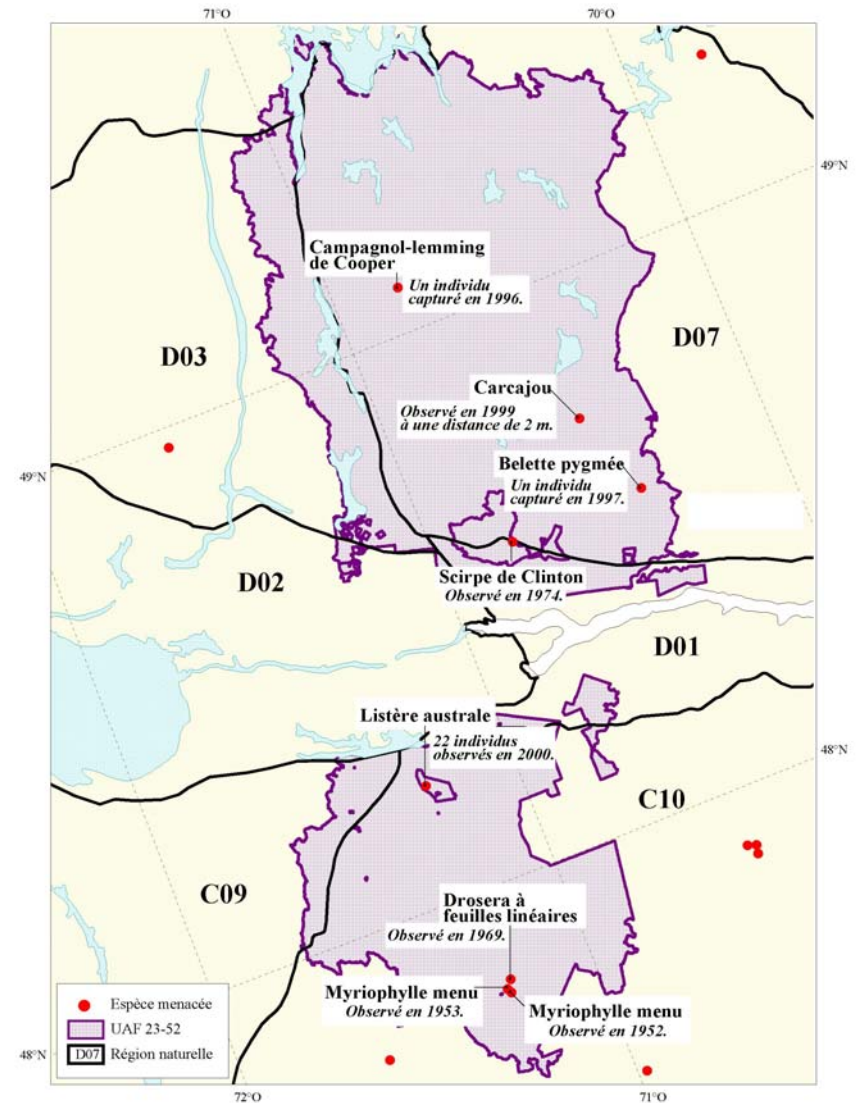


HCVF Identification in Saguenay

Main Issues

- Conserve Intact Forests
- Protect Caribou Habitat
- Protect Old Forests
- **Protect Endangered Species**

HCVF : Endangered Species





Endangered species



Southern Bog Lemming



Wolverine



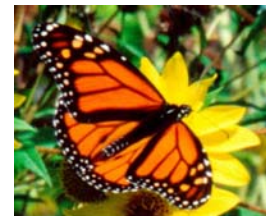
Linear-Leaved Sundew

Photo : Goldie Image



Least Weasel

Photo : Lasse Olsson



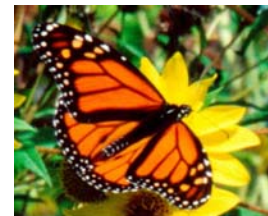
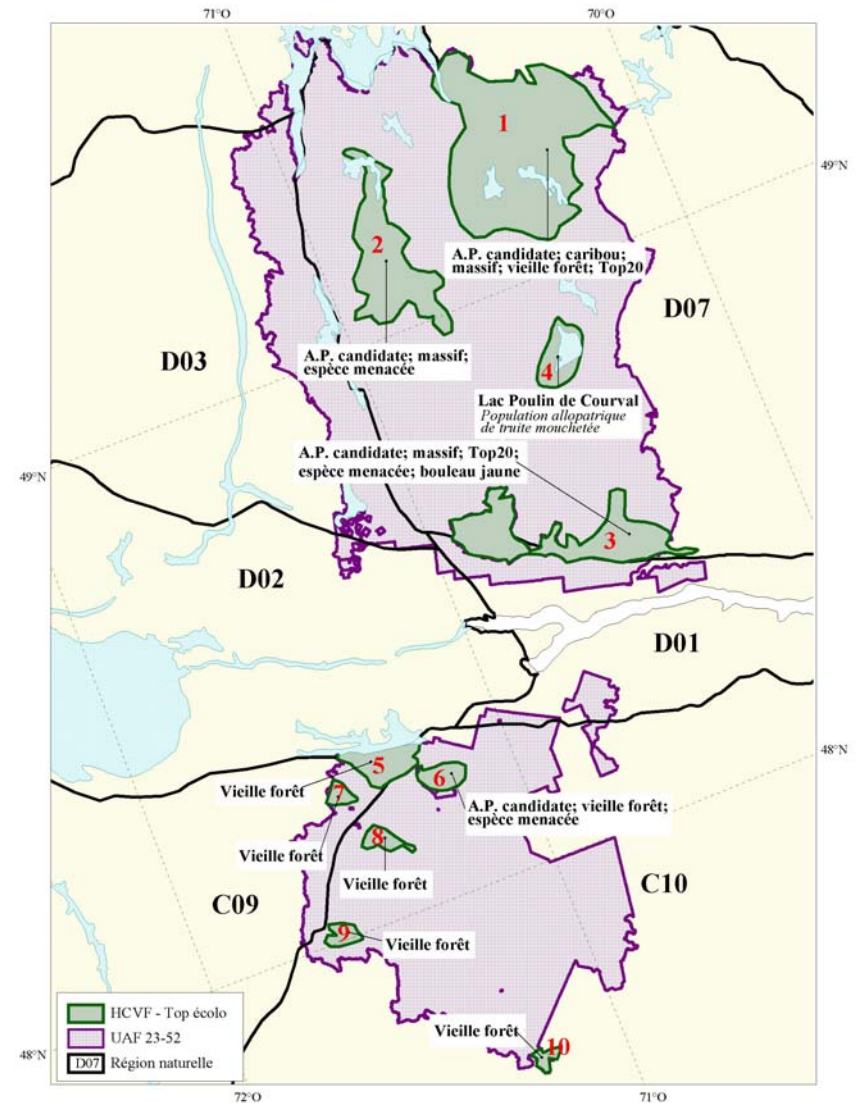


HCVF Identification in Saguenay

Main Issues

- Conserve Intact Forests
- Protect Caribou Habitat
- Protect Old Forests
- Protect Endangered Species

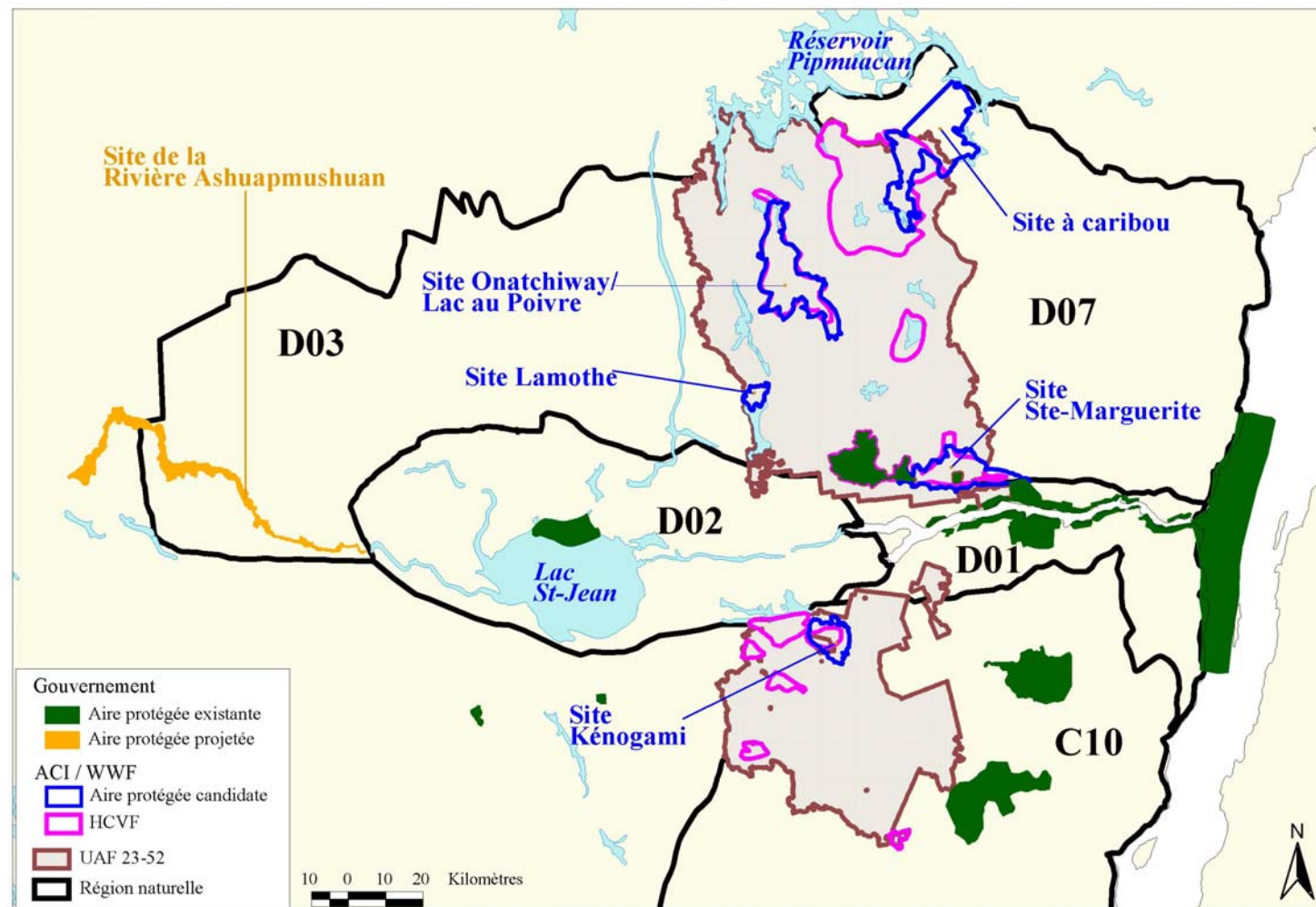
HCVF : **Final** (*Including
Some Cultural Values*)





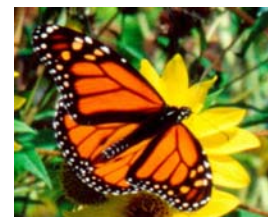
Projet pilote / UAF 23-52 HCVF et Aires protégées

Protected Areas and HCVFs



Gaétane Boisseau (WWF-Canada)

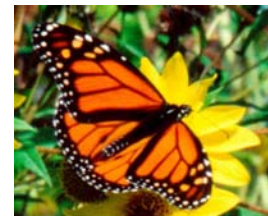
Janvier 2005





Obstacles to FSC Certification

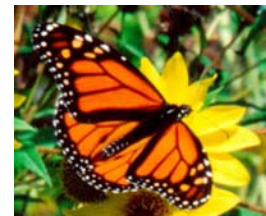
- Sharing of Management Accountability
- Lack of Autonomy for Companies
- Lack of Flexibility within the Law
- Gaps between Government's Standards and FSC
- Difficult Relations with First Nations
- Low Government Interest for FSC





Coulombe Report on Forest Management in Quebec

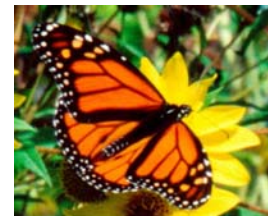
- *L'Erreur boréale* (Richard Desjardins, 1998) and 2002' Auditor General Report
- Coulombe Commission (2004); 81 Recommendations, including:
 - Reduce by 20 % the Annual Allowable Cut (Conifers)
 - New Positions : Chief Forester and Forest Auditor
 - Ecosystem Based Management, Zoning (Triad) and Results-Oriented Management
 - Protection : 8 % in Québec (2006), and 12 % in the Boreal Forest (2010)
 - Restore Deciduous Forests
 - Review the Harvest Level Calculation and ask the **BAPE** to Review the **PGAF**
 - Decentralize Forest Management and Diversify Tenure Systems
 - Adopt a Proactive Approach Regarding the Certification





Current Efforts

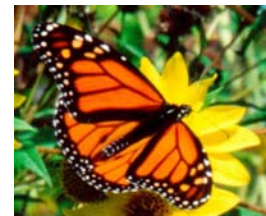
- Government :
 - Implementation of Coulombe Commission's Recommendations
 - Québec Protected Areas Strategy
- WWF-Industries
 - Pursue HCVF Identification and Candidate Protected Areas Work
 - Government Lobbying to Help the Implementation of FSC Certification and the Implementation the Main Coulombe Commission's Recommendations





Conclusion

- Québec's Forest Management is at an Historic Turning Point
- WWF is Working on Finding Viable Solutions and is Staying Alert
- Partnerships with Forest Industries are a Driving Force
- Social Pressure Must Grow





Thank You for your Attention

Gaétane Boisseau

gboisseau@wwfcanada.org

